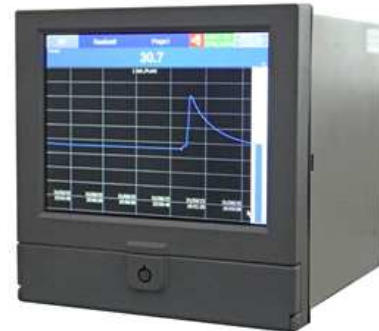


paperless recorder DT18-24

features

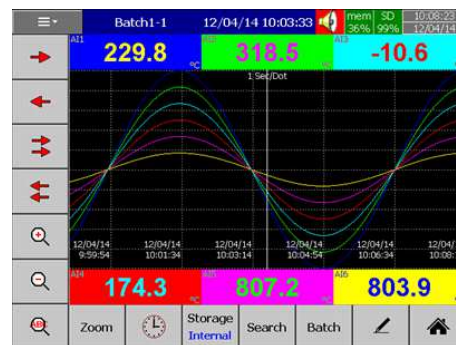
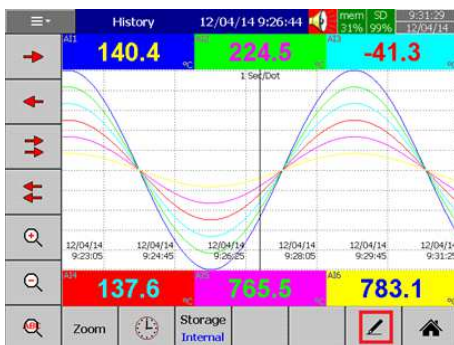
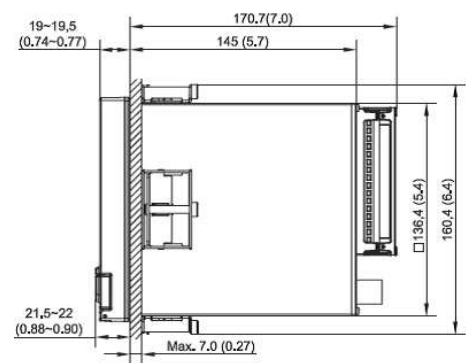
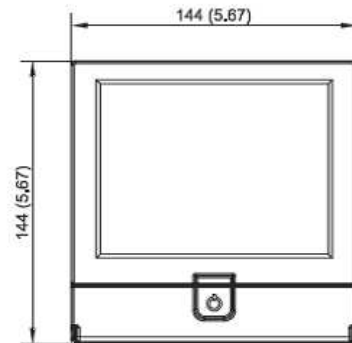
- paperless recorder with data logger function
- 24 analog channels possible
- very low installation depth of 171mm
- 5,6" TFT-display with **touch screen** (640x480 pixel)
- 256MB memory on board
- SD card reader, 2 USB inputs
- integrated Ethernet interface for communication
- mathematics module with calculations, counter, totalizer, CFR21part11, web server, e-mail function
- comprehensive software package for programming and data processing included




DT18-24

technical specifications

power supply	230VAC standard 24VDC optional
channel	3,6,12,18, 24 channels
dimensions	w144mm x h144mm x d189mm
temperature range	operating temperature 0...50°C
universal inputs	thermocouples: J, K, T, E, B, R, S, N, L, U, P, W5, W3, LR, A1, A2, A3, M Pt50, Pt100, Pt200, Pt500, Pt1000 ($\alpha=0.00385$), Pt50, Pt100 ($\alpha=0.00391$), Cu10 ($\alpha=0.00427$), Cu50, Cu100 ($\alpha=0.00426, 0.00428$), Ni100, Ni200, Ni500, JPt50, JPt100, JPt200, JPt500, JPt1000 ($\alpha=0.003916$), Ni1000 ($\alpha=0.00617$) mA, V, mV
analog inputs	24bit resolution, scan rate 100ms each card 3 universal analog inputs each card 6 universal analog inputs
digital inputs	6 digital inputs
analog outputs	6 universal outputs mA and V
relay outputs	6 relay outputs
input/output card	3 digital inputs and 3 relay outputs
scan rate	100ms
display	5,6" TFT touch screen LED, 640x480pixel, 65K colors screensaver
email	email function
ethernet	modbus TCP/IP
RS-232/422/485	optional RS 232 or RS 422/485 modbus RTU
memory	256MB on board, SD memory card, 2 USB inputs
puls input	optional DI card provides either logic or high-frequency pulse counter
languages	19 languages possible
protection class	IP65 front IP20 rear
software	included in delivery on CD



 paperless recorder DT18-24

Order-code: DT18-24

order example: DT18-24-1-X-X-X-X-0-1-0

power

- 1 230VAC
- 2 24VDC

function Slot 1

- A 3 universal inputs analog
- X 6 universal inputs analog

function Slot 2

- A 3 universal inputs analog
- X 6 universal inputs analog
- B 6 digital inputs
- C 6 relay outputs
- E 3 digital inputs, 3 relay outputs
- F 6 universal outputs mA und V

function Slot 3

- A 3 universal inputs analog
- X 6 universal inputs analog
- B 6 digital inputs
- C 6 relay outputs
- E 3 digital inputs, 3 relay outputs
- F 6 universal outputs mA und V

function Slot 4

- A 3 universal inputs analog
- X 6 universal inputs analog
- B 6 digital inputs
- C 6 relay outputs
- D fixed power supply with 6x24VDC for 2-wire transmitter supply
- E 3 digital inputs, 3 relay outputs
- F 6 universal outputs mA und V

option 1

- 0 ethernet interface
- 1 ethernet interface and RS232
- 2 ethernet interface and interface 422/485

option 2

- 0 version standard
- 1 function Math module, counter, totalizer, CFR21part11

option 3

- 0 no option 3
- 1 bench top portable style with handle (on request)

Optionally, it is possible by us to install the paperless recorder in heavy-duty housing. It can be integrated further transmitters, power supplies etc.. With pleasure we make you an offer for your individual paperless recorder.